

THE BIBLE: A BRIEF STORY OF 4000 YEARS OF HISTORY

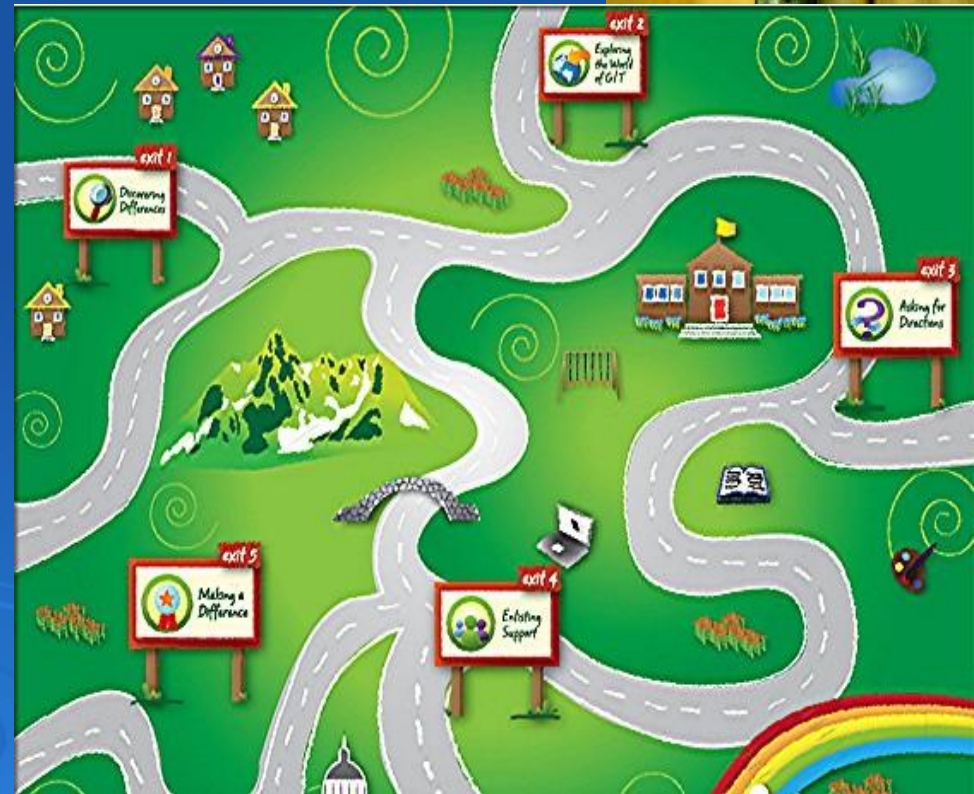
- Samuel:
priest/prophet/judge
- Saul: 1st human king of Israel
- Bible records only the most relevant events
- Time period of the NT is about 100 years
- Time period of the OT is several millennia

The History Book of the Universe



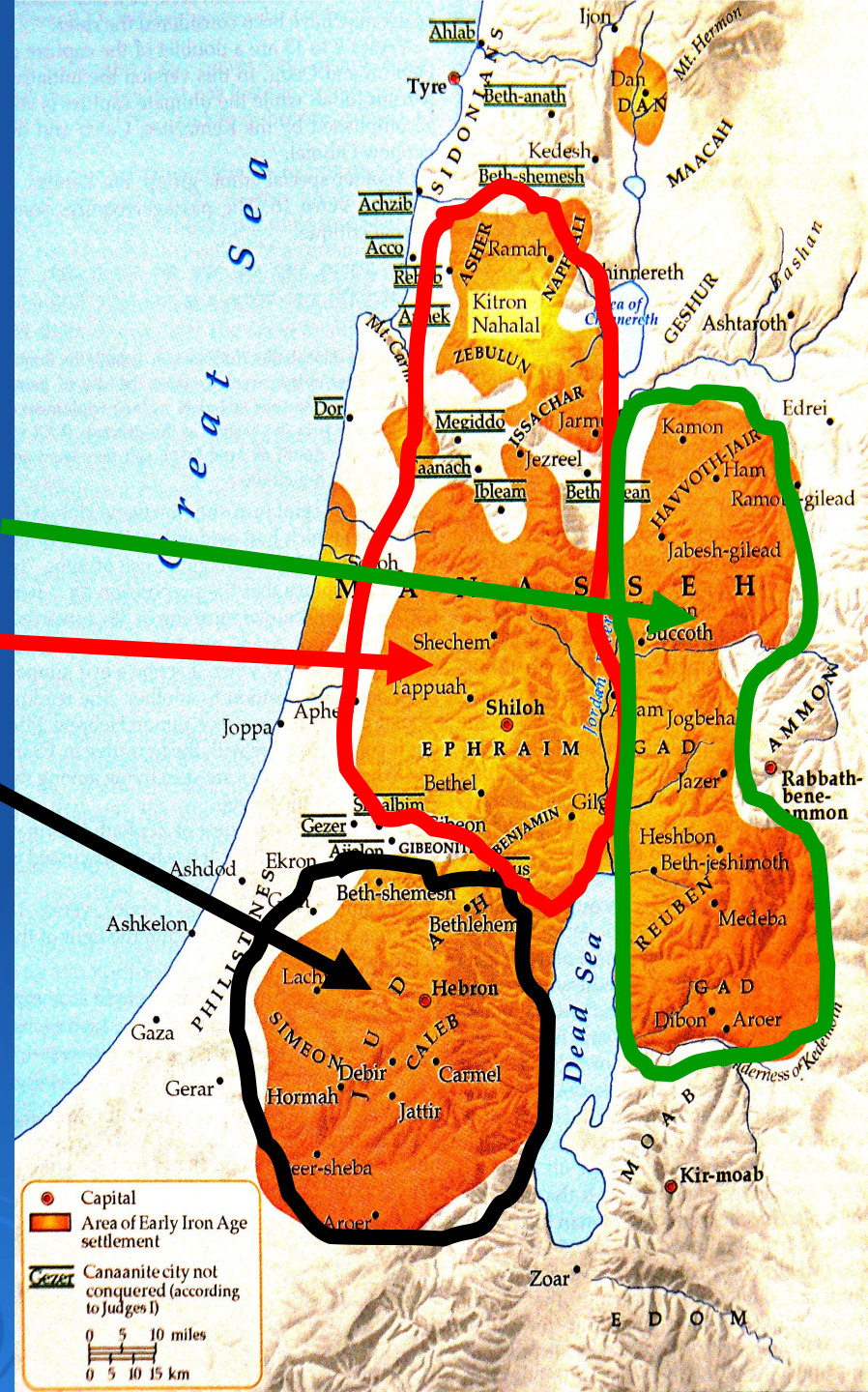
BIBLE STORIES ARE HISTORICAL MILE MARKERS

- Bible seems to leap from story to story
- But what lies in between those stories is crucial
- Saul's ascent to the throne was preceded by much preparation
- Decisions were made in the context of unique life experiences and circumstances
- Many factors played pivotal roles in bible narratives



POLITICAL FACTIONS

- Back in Joshua's time Israel began to fracture
- TransJordan confederation
- Northern confederation
- Southern confederation
- Saul was both the divine ideal choice and practical choice for the circumstances
- Natural boundaries served to help define the factions



FAMILY FACTIONS



- Judah, Issachar and Zebulun had Leah as their mother
- Ephraim and Manasseh's (grand)mother was Rachel
- Some born to Jacob's concubines Bilah and Zilpah
- Saul as a kind of failed Messiah
- All Judges were "messiahs" *mashiach*

THE MITZPAH CONVOCATION

- Saul anointed by Samuel at a private ceremony in Zuph
- Mitzpah a favored place for Samuel
- Mitzpah had an altar and probably some kind of tent shrine
- Ark of the Covenant was moved around
- Mitzpah favored holy site of northern tribes
- Possibly Hebron favored holy site of southern tribes

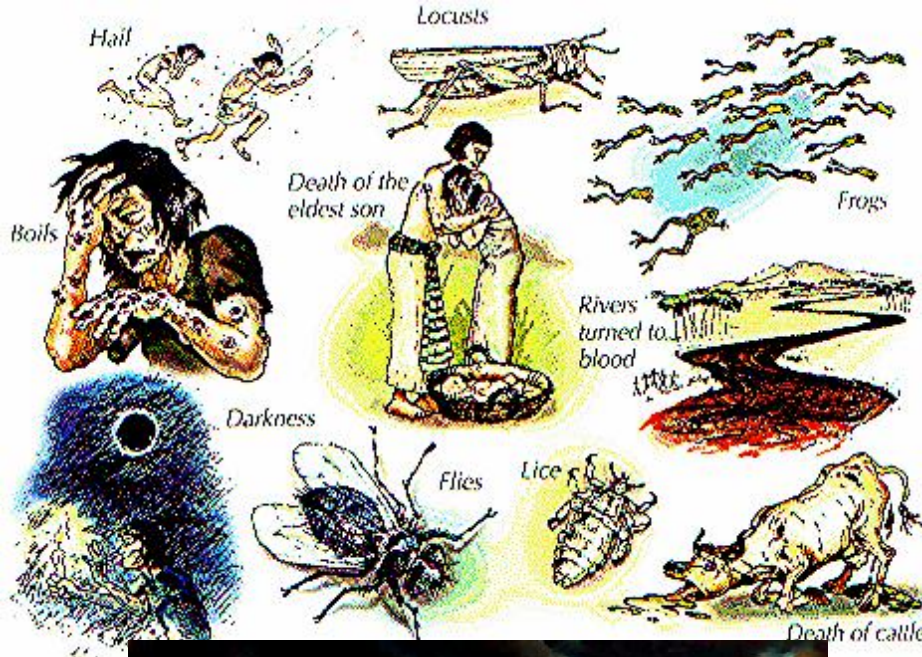


THE PROPHET FORMULA

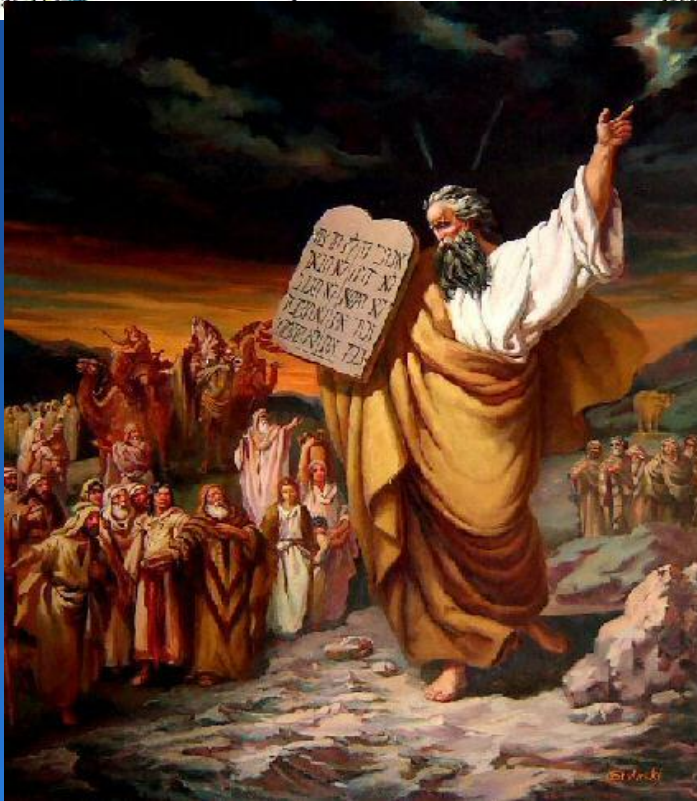
- “Here is what the Lord says”
- Indicates that this is the Lord’s direct oracle and not the Prophet’s own words
- The original 1st Commandment Ex 20: 2
“I am the Lord your God, who brought you out of the land of Egypt....”
- The quintessential biblical statement on Redemption



1ST REDEMPTION THEN OBEDIENCE



- FIRST God redeemed His people and then He gave them His Laws at Sinai
- The bible is ONLY for Believers in the God of Israel
- **Yasha** = saves
- Israel is abandoning the one who saves (YHWH) in favor of a human (Saul)



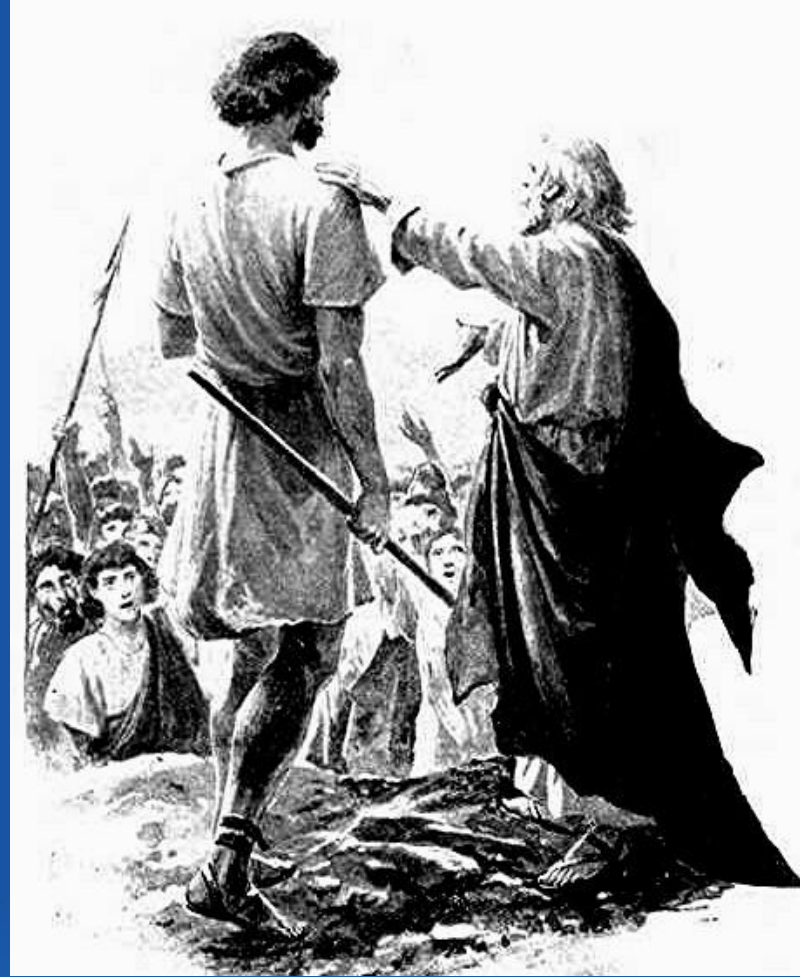
GOD THE KING VS. SAUL THE KING

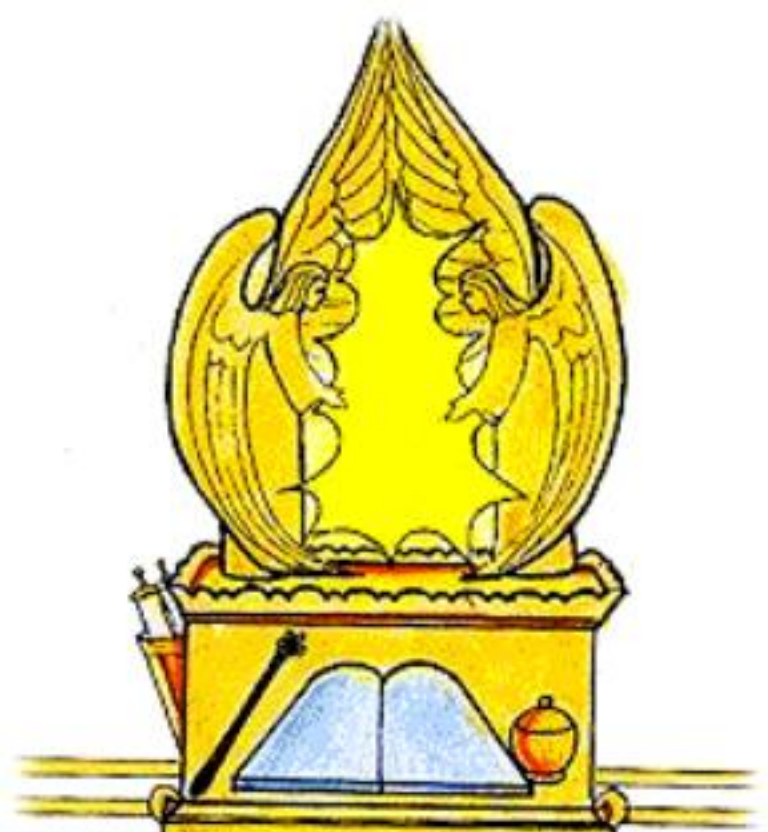
- God wants NO IMAGE to depict Him
- Saul is all about IMAGE
- Regal = stately, splendid, royal
- Regal is the characteristic of a HUMAN KING
- Lots were drawn at Mitzpah to indicate Saul was the chosen one
- The PROOF in Israel's eyes that Saul was the proper choice was his HEIGHT!



LOTS: INDICATION OF THE DIVINE CHOICE

- Lots and the Urim & Thummim were in use to indicate divine choice in this era
- *Goral* = lots
- Lots was NOT a game of chance
- “Before the Lord” means something occurred in front of the Ark of the Covenant





THE LAWS OF THE KINGDOM

- Deuteronomy 17:14 – end
- Israel would put limits in their king
- Samuel's scroll was about the rights of the kingdom, and the DUTIES of the King
- **Gibborim** = men of valor, these were Saul's personal bodyguards
- Bene-Belial (worthless men) were the dissenters
- Probably were mostly leaders of the southern tribal confederation
- Too much strong dissent for Saul to rule immediately

